

Apreciabel mayor(nan) di



Di naturaleza band'i lama
tambe nos por combersa.

Tema di lesnan di idioma pa e proximo tres simannan ta:

E prins di Boca Prins

Lo trata entre otro: - naturaleza banda di lama
- con pa cuida nos mondinan
- diferente number di pisca

E mucha lo train: Categorisa material di banda di lama.
Experimenta cu material cu ta drif y zink.
Bira consciente di limpieza di nos medio-ambiente.
Nombra diferente material y bestia.

Loke por haci na cas: Wak buki cu ta trata pisca.
Bishita un di e hopi bocanan di lama.
Bay pisca cu bo yiu.

Pa hiba scol: - material di piscamento
- caha di zapato pa traha acuario

Cumindamento di

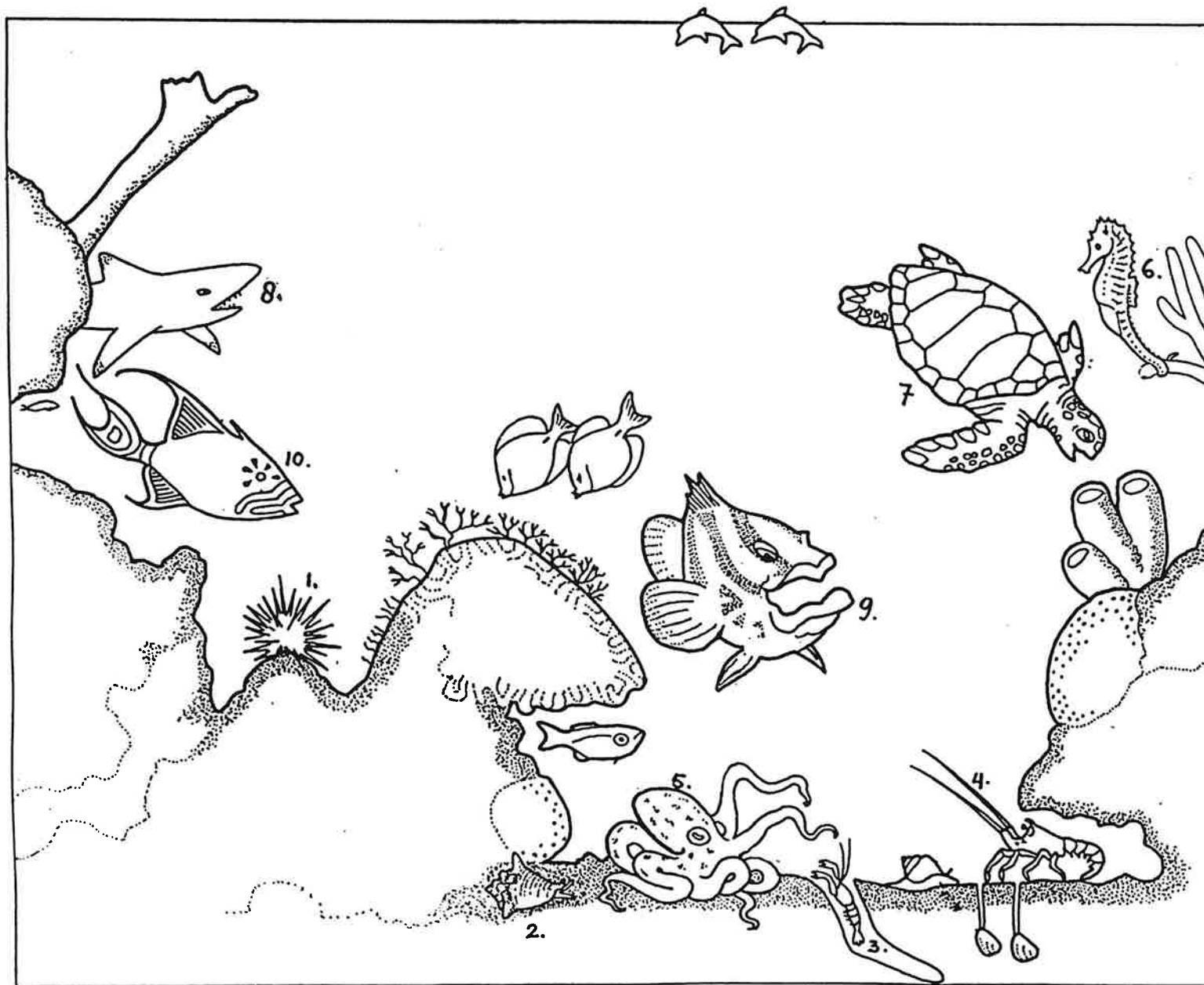
Fecha

BAN TRAHA HUNTO

➤ Hunto cu bo yiu ta wak e plachi y nombra e bestianan di lama. Por conta un tiki, p.e. ki color nan tin y por combersa tocante bida bou di awa. Na final por kleur e plachi.

Tin pintura di:
bushi (1), carco (2), cabaron (3), creft (4), secat (5), cabay di awa (6), diferente tipo di coral, turtuga (7), tribon (8), djampou (9), clenfish (10), etc.

➤ Por papia tambe tocante con pa cuida nos lama.



cabrito

coneu

prikichi

seida

cocorobana

bringamosa

baranca

fundeshi

foyo

coral

cangreu

buladeifi

sombra

soldachi

cup

cocolishi

calco

anzue

reina

bushi

corki

liña di pisca

strea di lama

palacio

seña

hero

watapana

walishali

tuna

bulldozer

forki

morocoy

simia

straw

pijp

tapadera

dam

monster

toren

bariga hel

turtuga

hengel

reda

djampou

purunchi

prinses

kasteel

rey

soldat

yerba di lama

cañon

trupial

prins

acuuario

mochi

cabaron

creft

canaster

taray

gutu

tengla

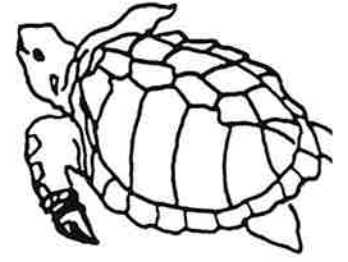
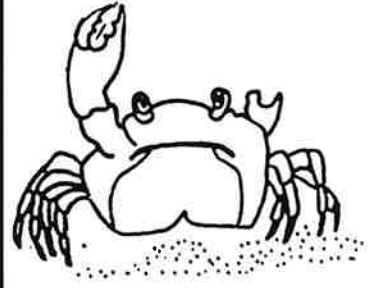
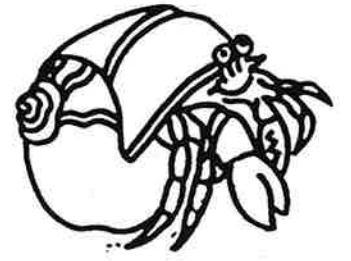
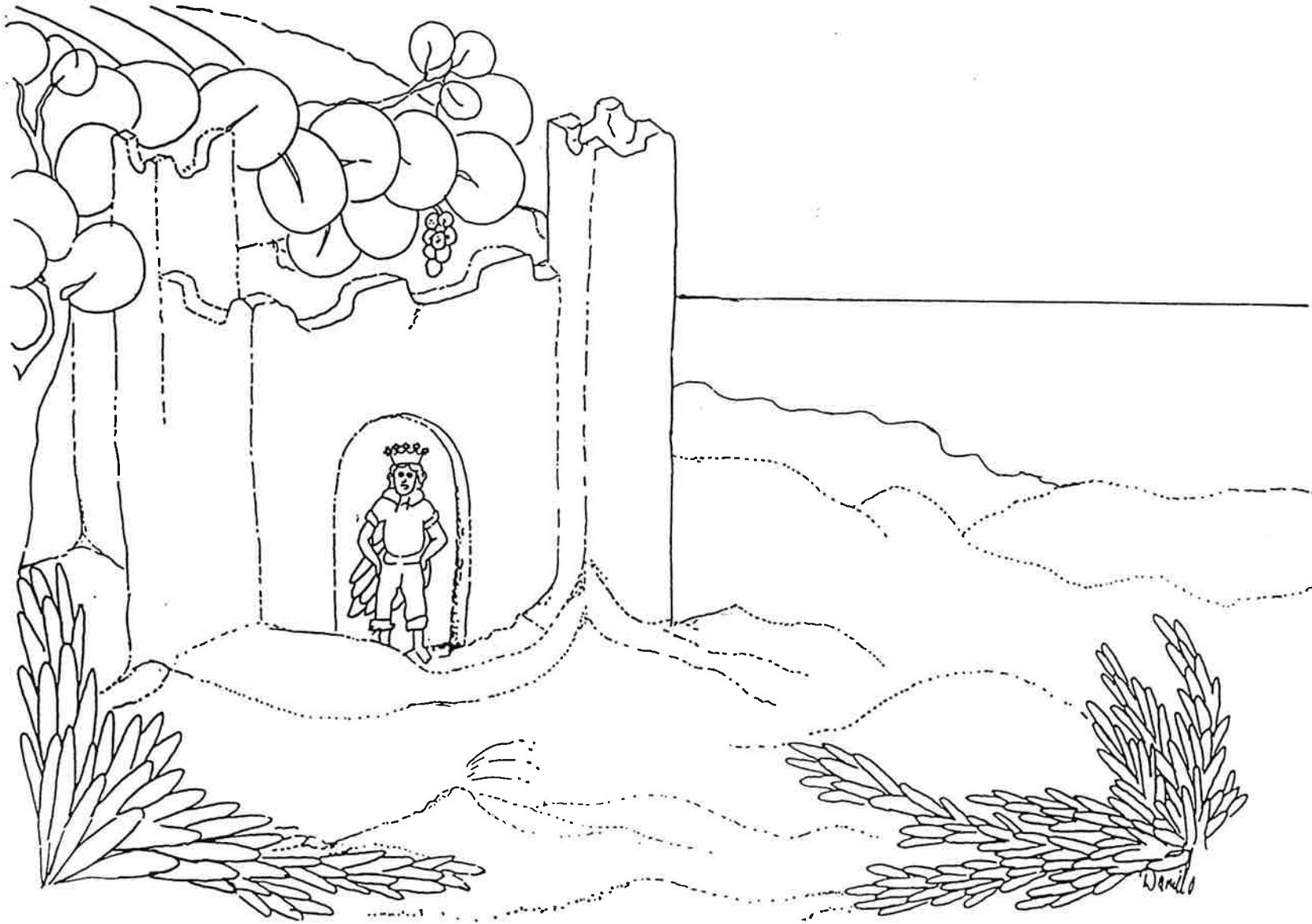
sardinchi

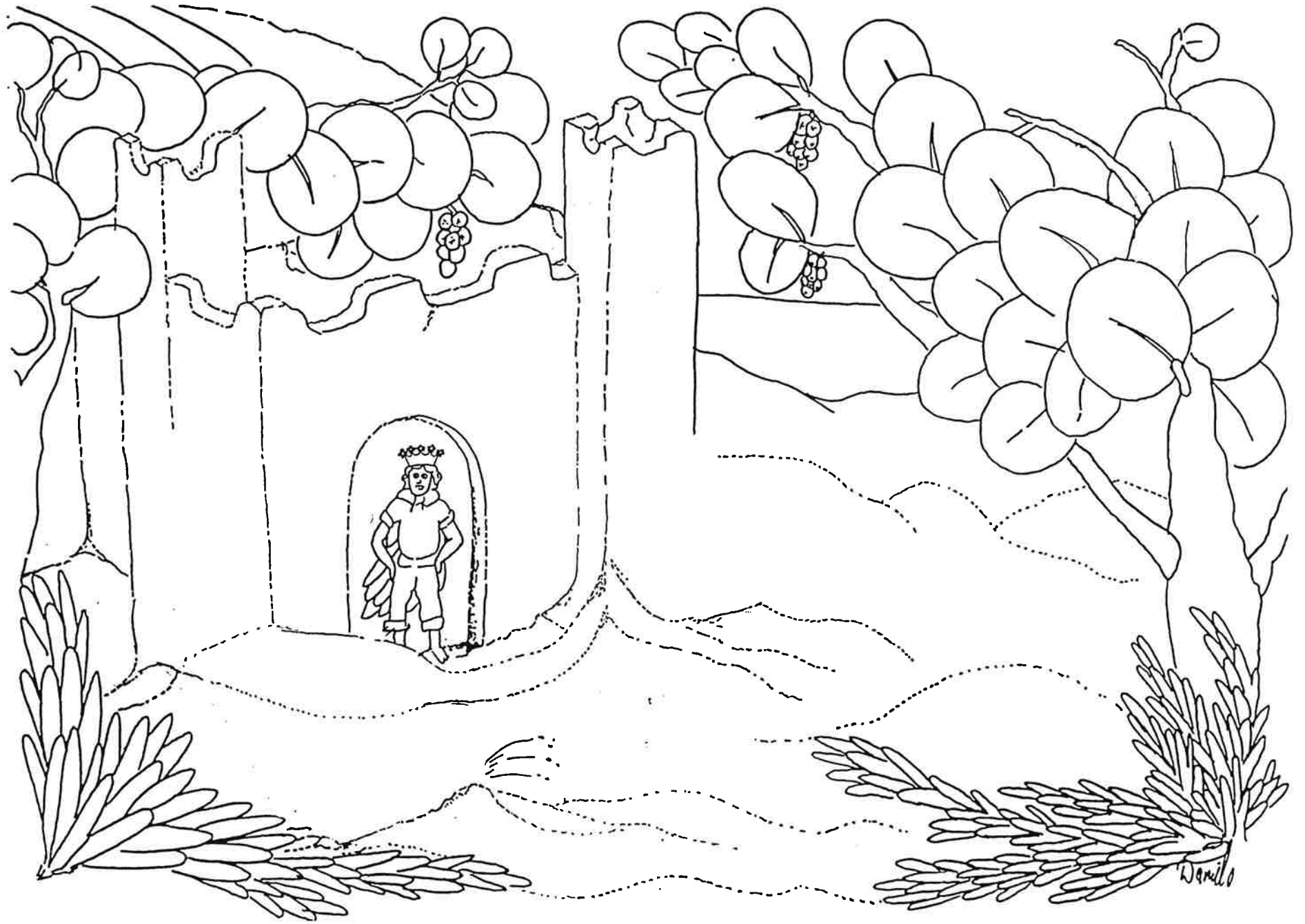
palacio

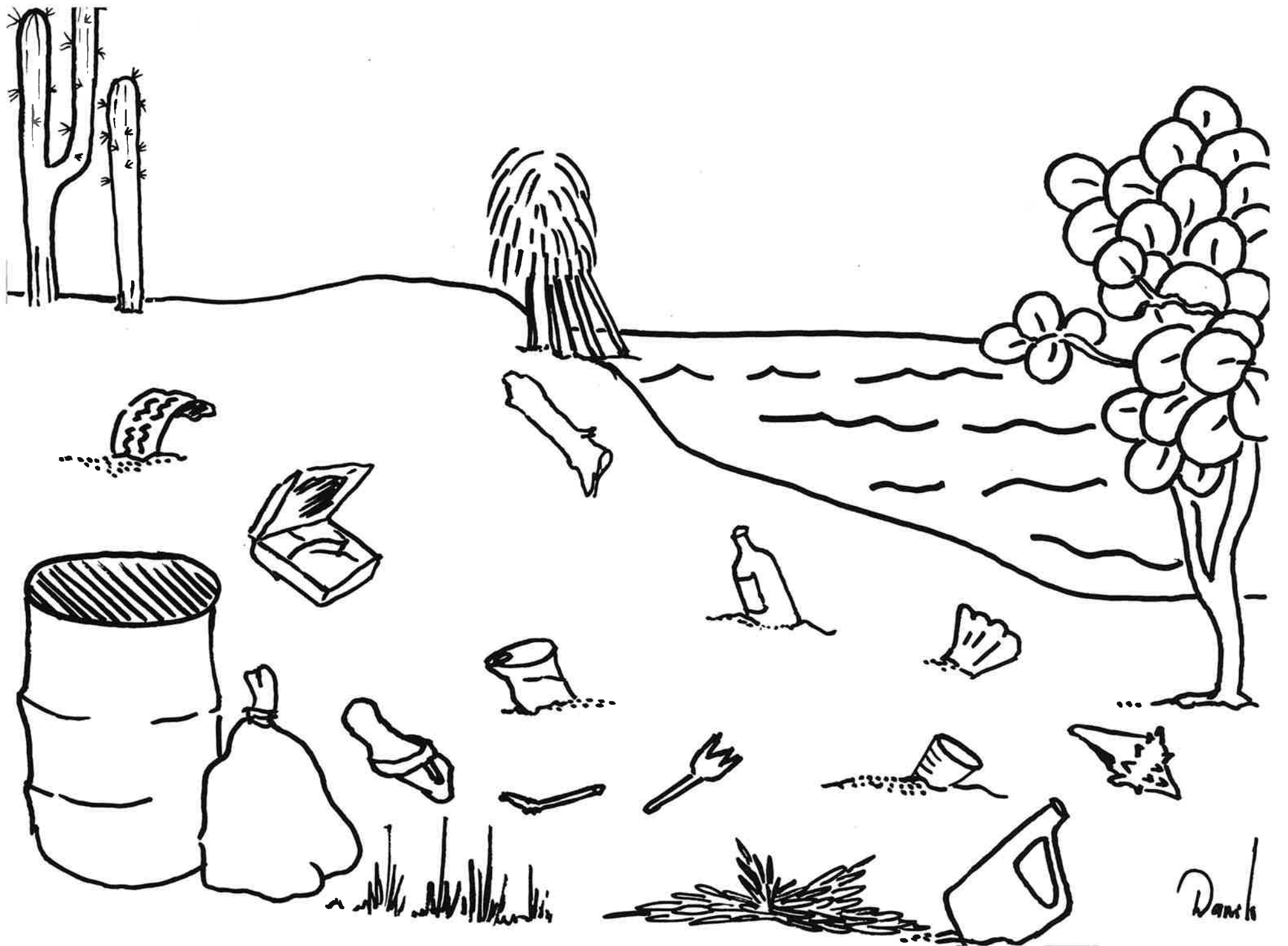
pargo

picuda

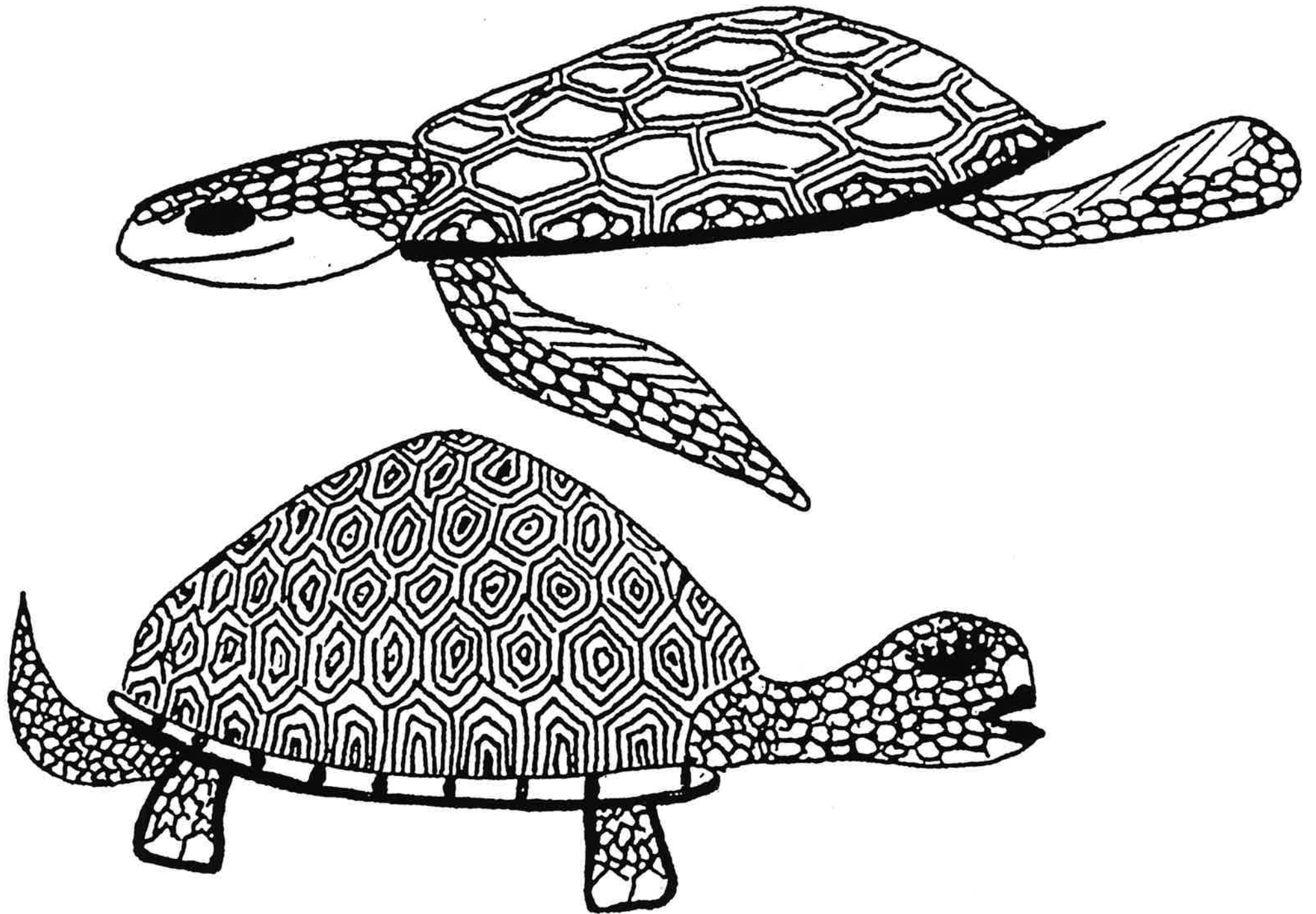
piskechi

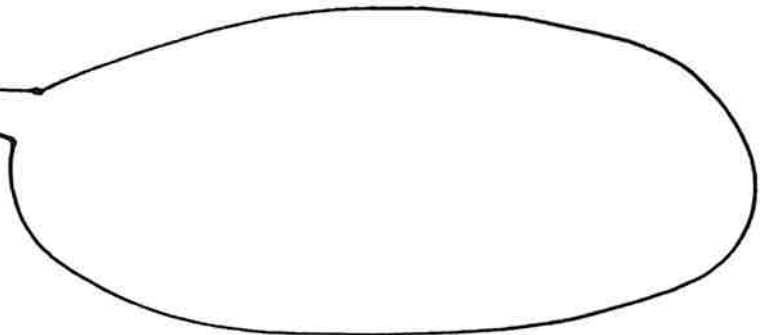
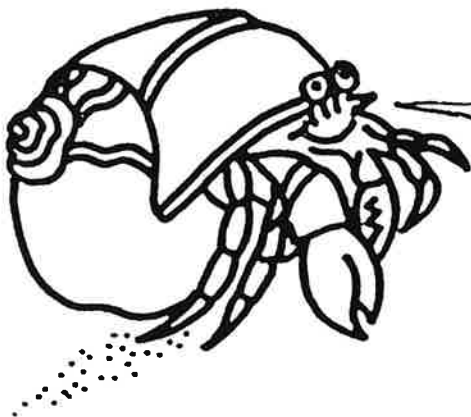
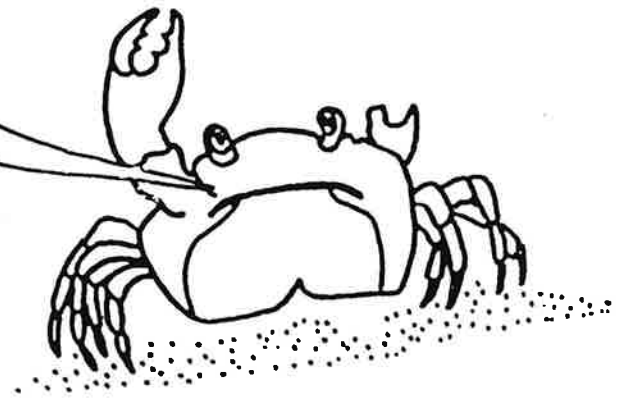
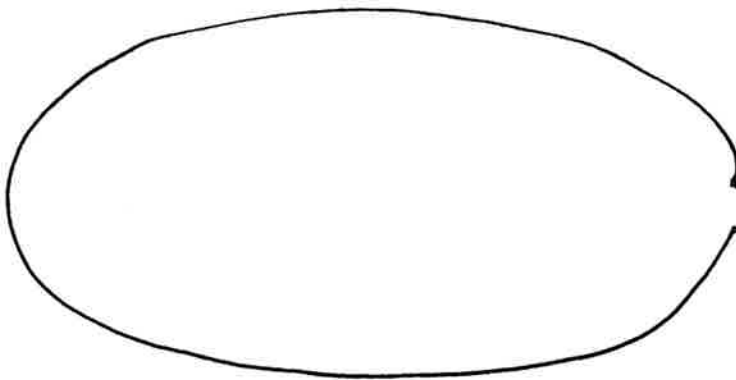
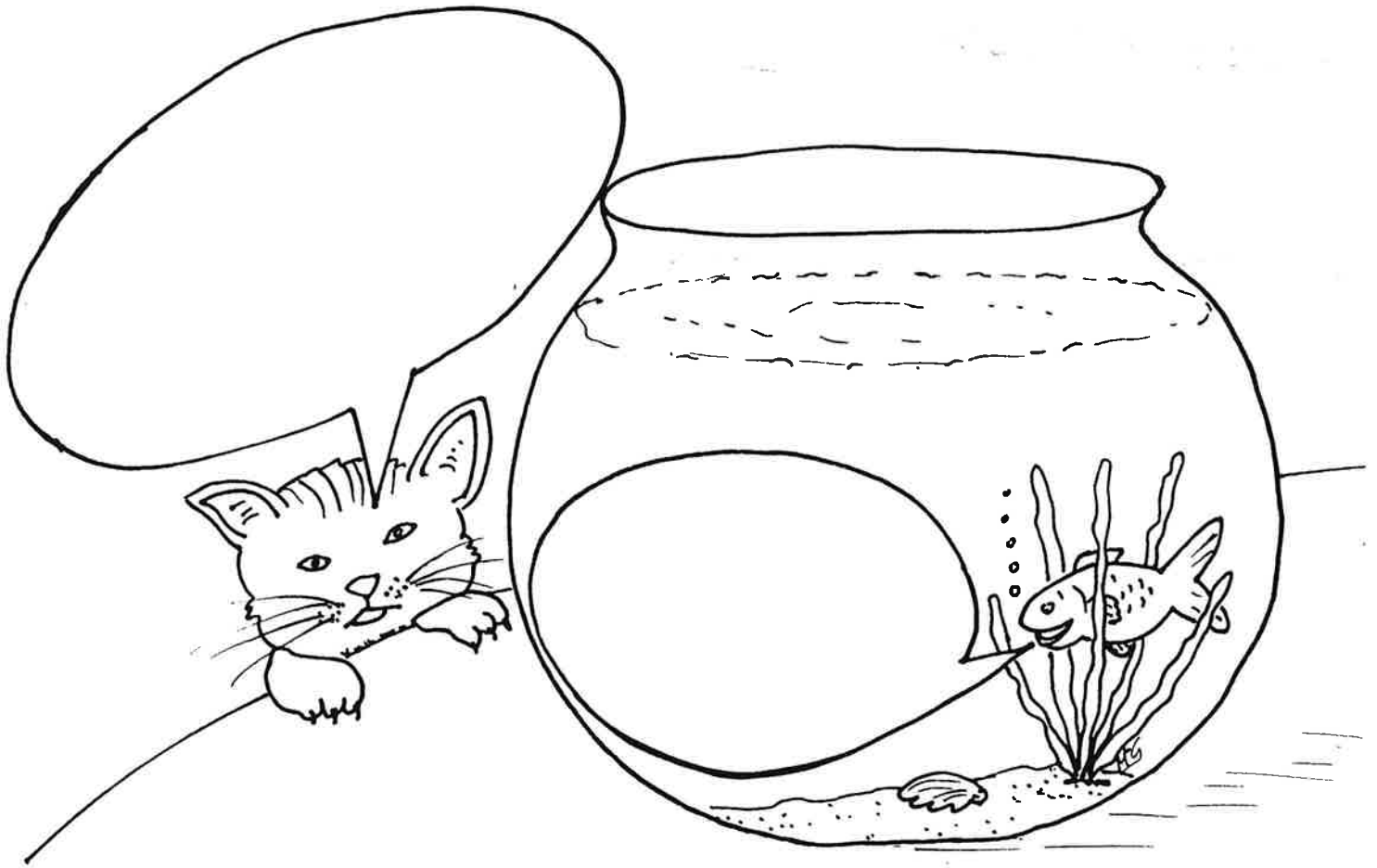


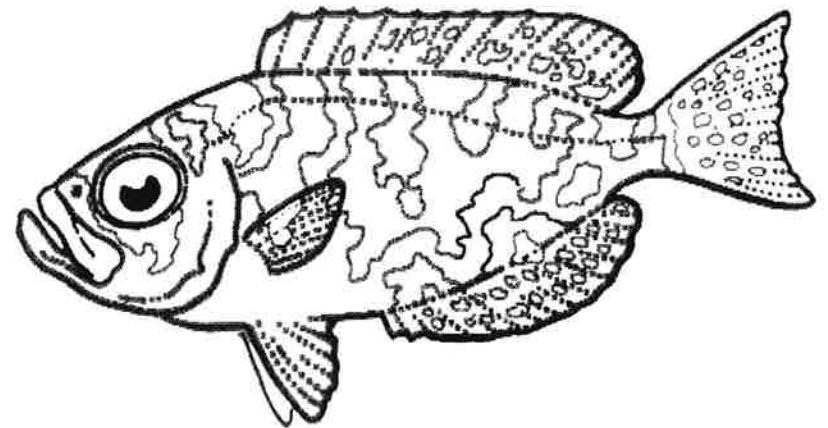
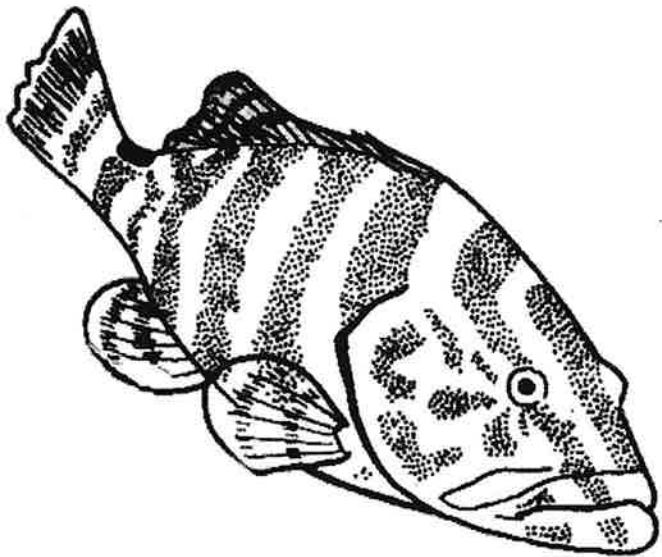
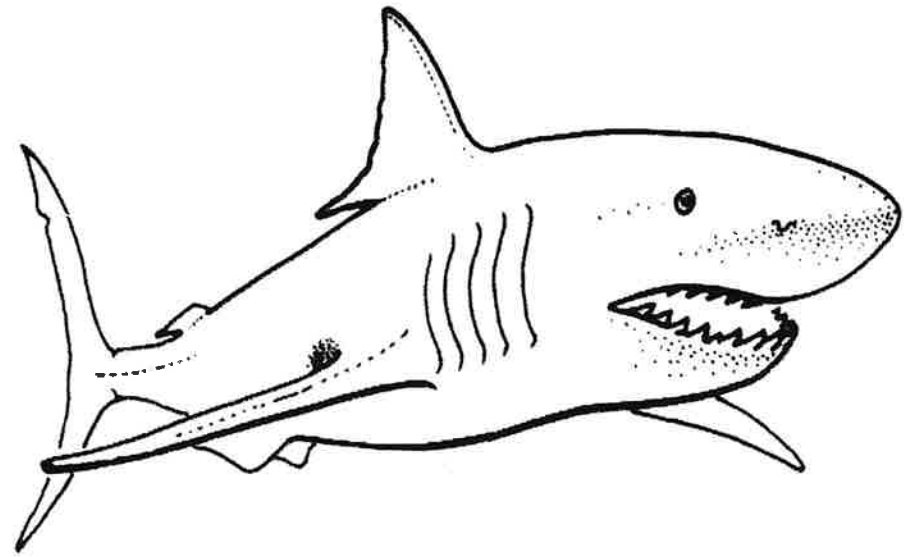
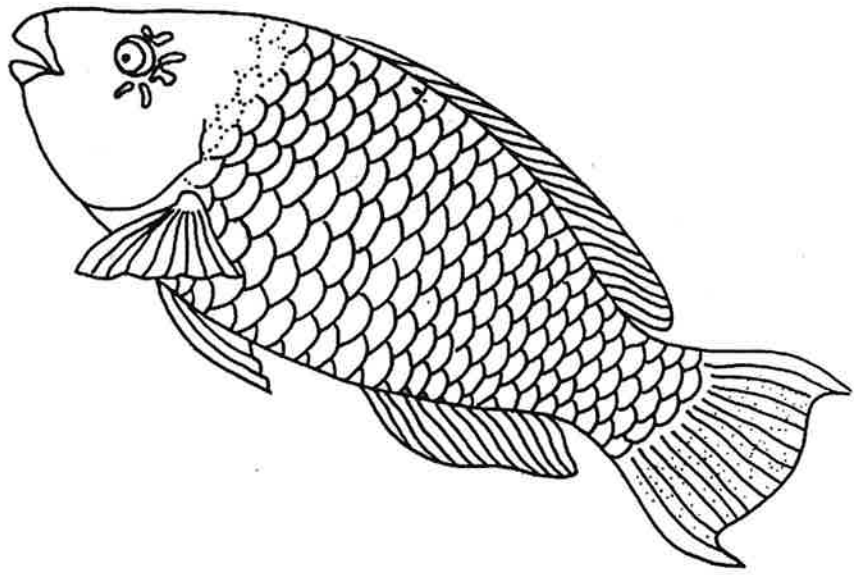


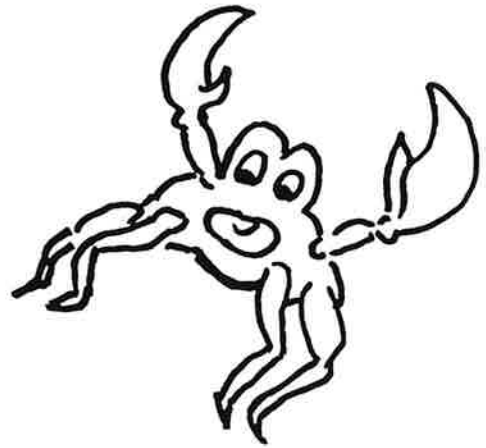


Dank

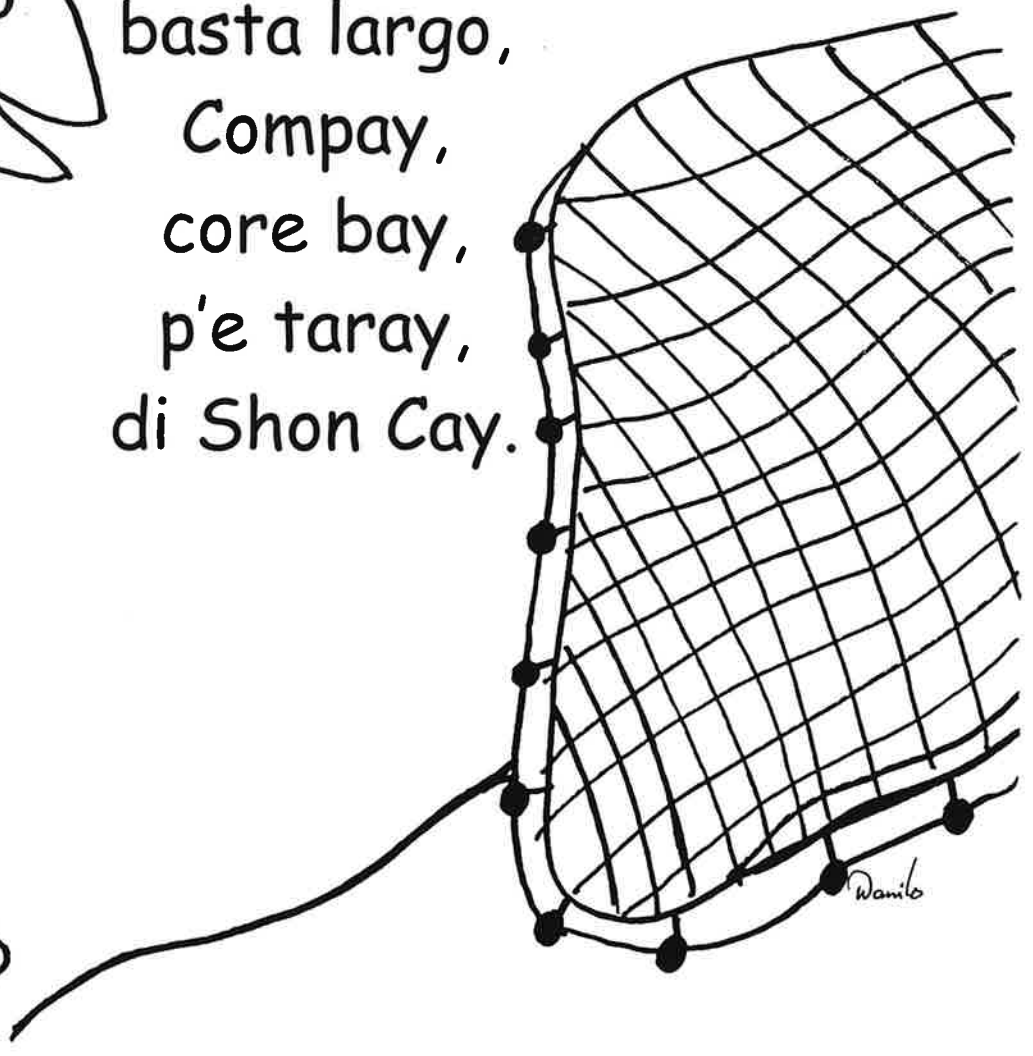


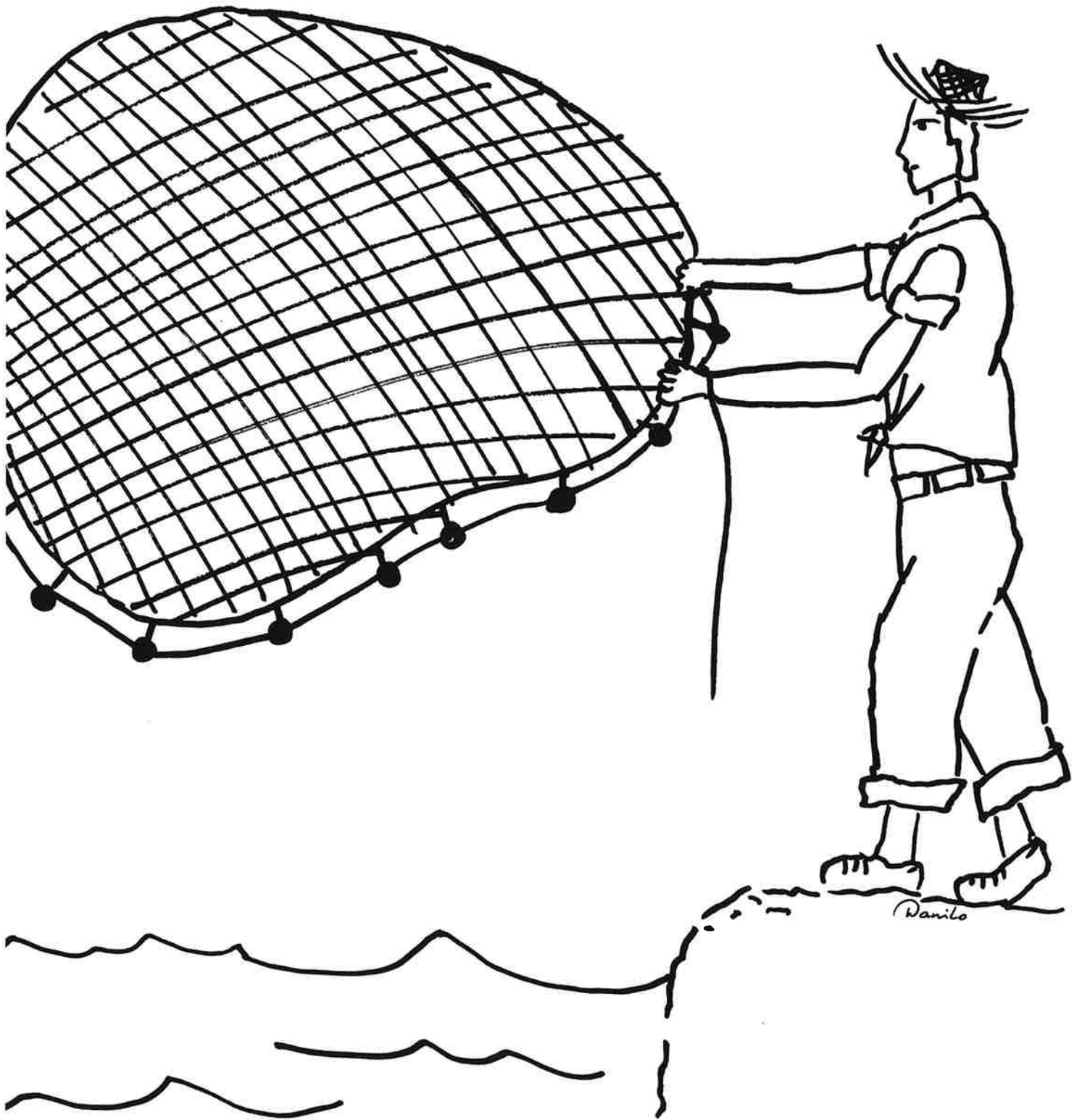




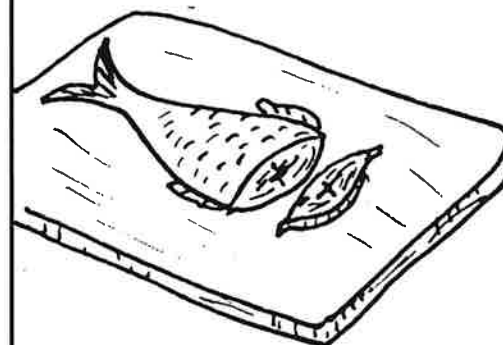
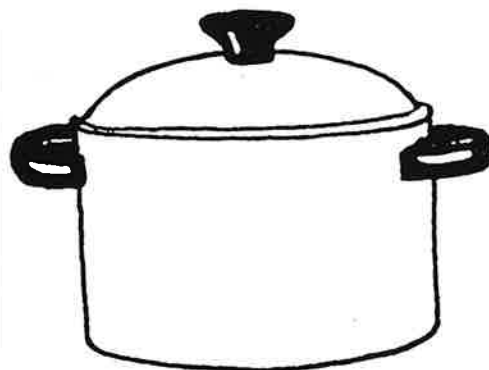
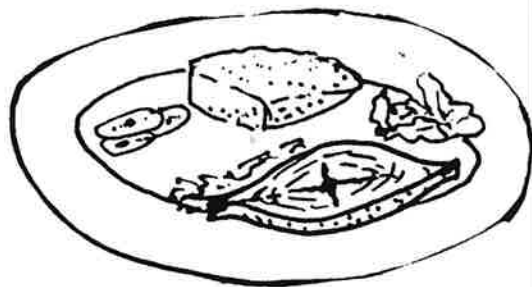


Un cangreu
no muchu bieu,
a bisa un pargo
basta largo,
Compay,
core bay,
p'e taray,
di Shon Cay.

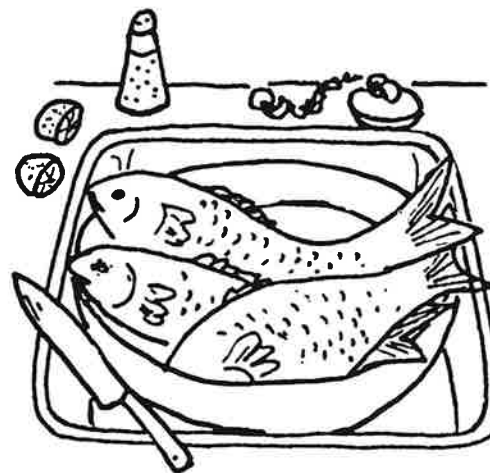




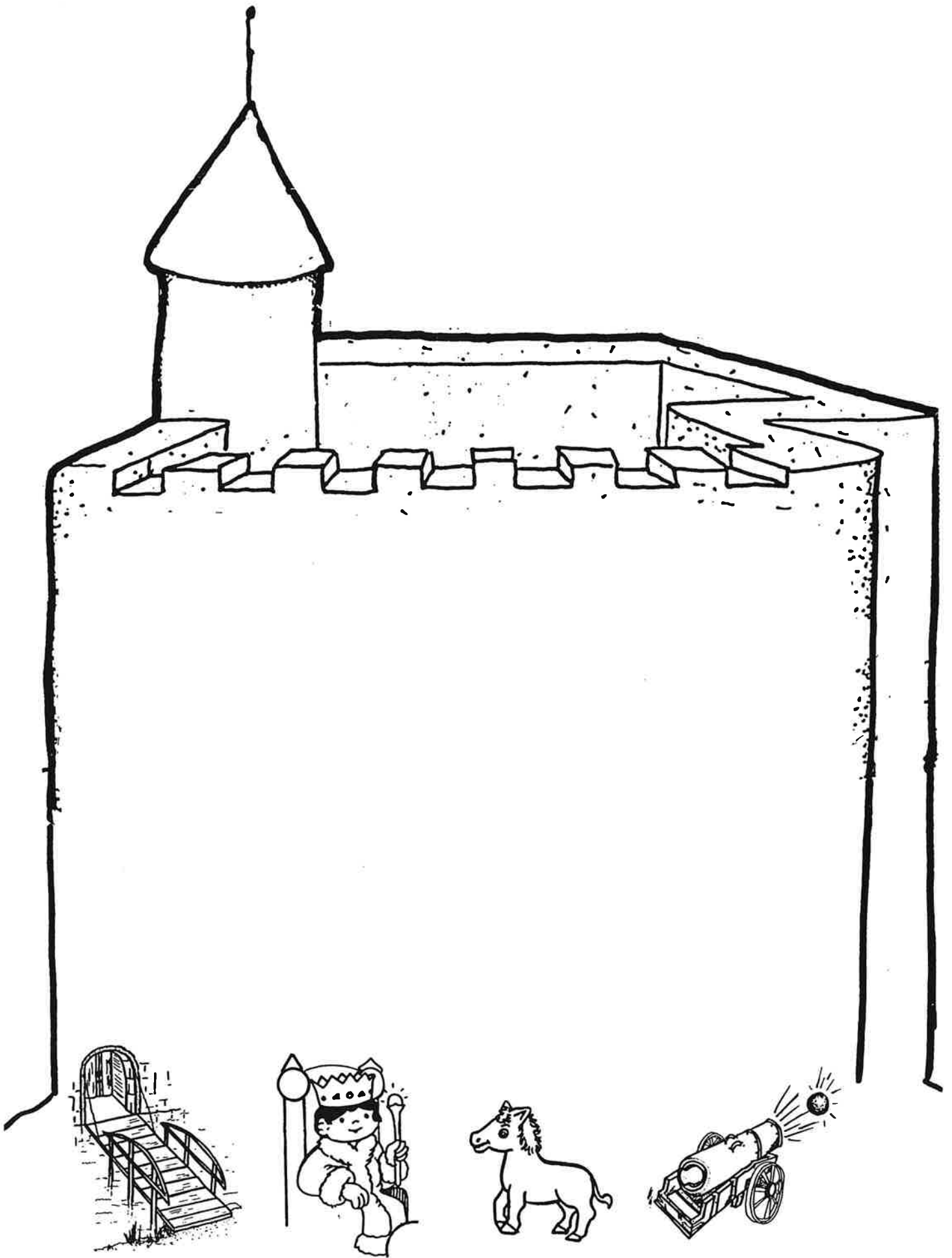
Danilo

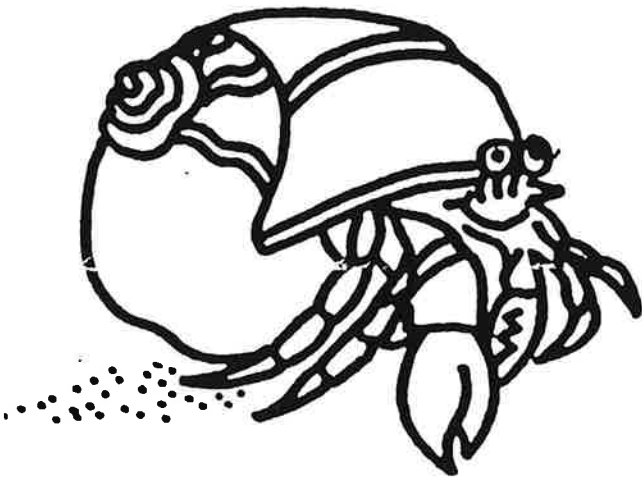
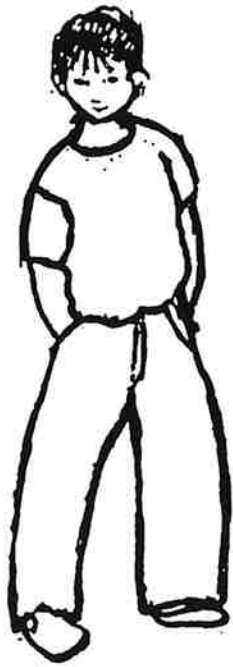


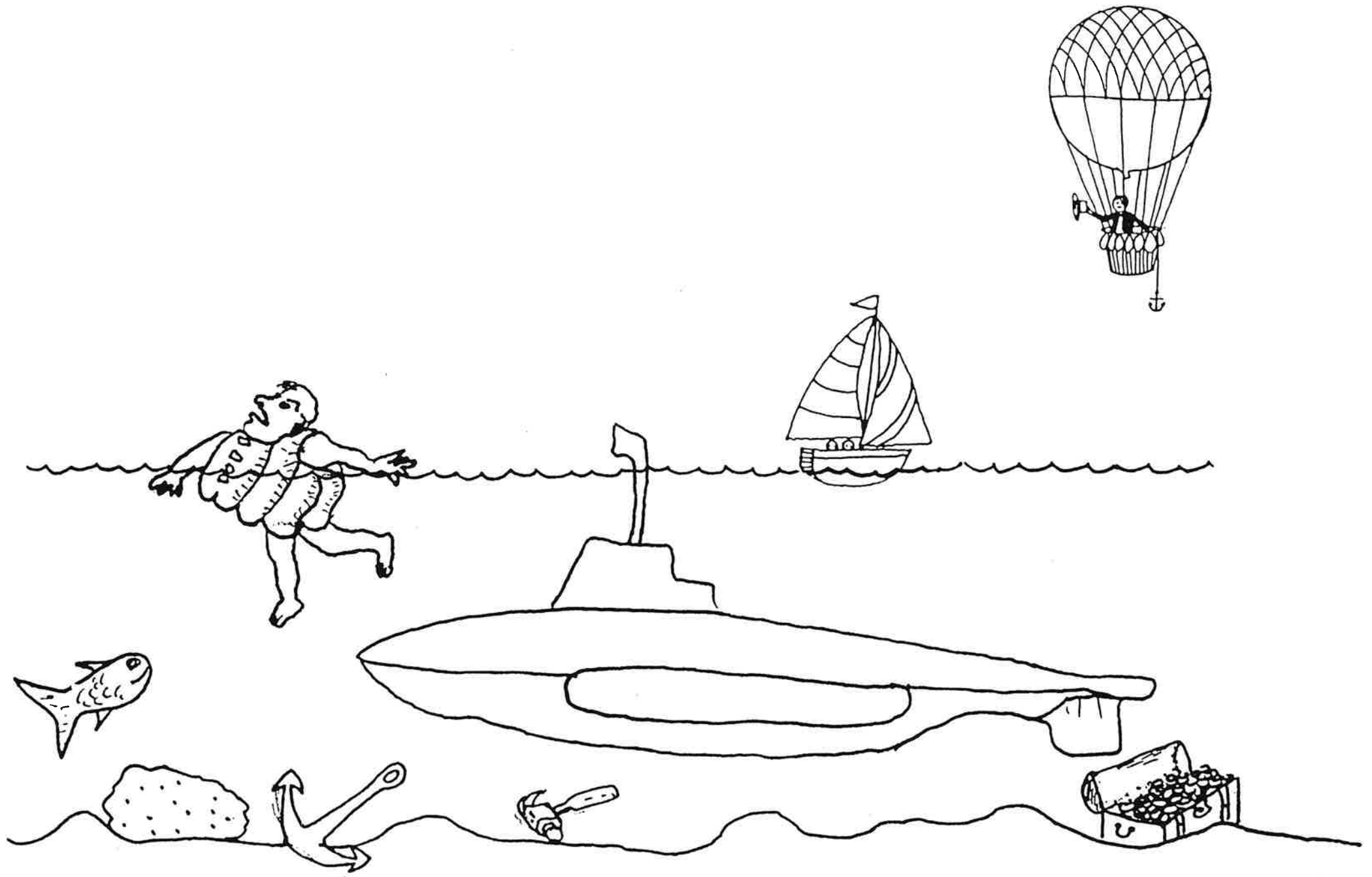
Bo kier traha un sopi
cu tur cos di lama.
Splica kico bo ta tira
den sopi



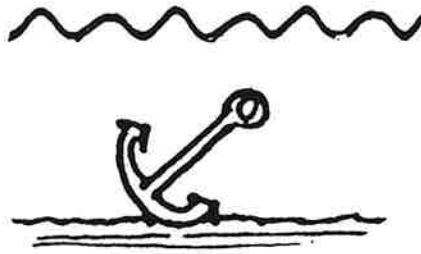
Bay na e borchi di
palabra y scoge 2
pisca cu bo no ta
corda nan nomber.







zink



drif

